



# HAND BLENDER XM-51

Professional immersion blender. 570 W.



- ✓ Life-plus: equipped with a motor which has passed all of the most demanding usage tests.
- ✓ Studied geometry: casing designed to avoid rolling and falling.
- ✓ Ultra-durable arms designed to stand high temperatures in operation.
- ✓ Easy to clean: the arm can be washed under the tap or in the dishwasher.
- ✓ Approved by NSF: guaranteed safety and hygiene.

## INCLUDES

- ✓ Fixed speed motor block.
- ✓ MA-51 mixer arm.
- ✓ Wall mount.

## OPTIONAL

- ☐ MA-52 mixer arm.
- ☐ "Quick fix" clamp.
- ☐ Clamp sliding frame.

## ACCESSORIES

- ☐ Clamp sliding frame
- ☐ Motor unit MM-50
- ☐ Mixer arms MA-50
- ☐ Quick-Fix bowl clamp

## SALES DESCRIPTION

- ✓ Fixed speed motor block.
- ✓ 425 mm detachable arm.
- ✓ Designed for continuous use in recipients of up to 80 l.

### All-in-one

- ✓ Professional hand blender designed for carrying out different preparations without the need for add-on tools.
- ✓ Professional Y-blade, made from tempered steel and with a long-duration cutting edge.
- ✓ Fixed speed.
- ✓ Designed to work in recipients of up to 80 l.

### Exclusive TiltStop system

- ✓ Your hand blender will stop in case of a fall or excessive tilt from the vertical position.
- ✓ Moreover, it won't initiate unless it's in the correct usage position.
- ✓ This ensures optimal operation and increases the operator's safety at the workplace.

### Maximum comfort for the user

- ✓ Compact design: logical and manageable size.
- ✓ Ergo-design & bi-mat-grip: external casing made in two materials for an ergonomic hold. Anti-slip grip. Optimum inclination of handle, minimising fatigue.
- ✓ Click-on-arm: detachable arm with fast and secure closure.
- ✓ Hood designed to avoid splashes.
- ✓ Intuitive use: very simple operation. LED warning light in two colours to indicate the status of the machine.
- ✓ Possibility of continuous operation.

### Built to last

- ✓ Professional performance: capable of carrying out prolonged work without the casing overheating.

## SPECIFICATIONS

Total loading: 570 W  
Maximum recipient capacity: 80 l  
Maximum working depth: 283.3 mm  
Motor speed: 12000 rpm  
Blade diameter: 60 mm  
Blade guard diameter: 101 mm

### Length

Liquidising arm length: 425 mm  
Total length: 765 mm  
Net weight: 4.79 kg  
Noise level (1m.): <80 dB(A)  
Crated dimensions  
575 x 455 x 130 mm  
Gross weight: 5.94 kg

## AVAILABLE MODELS

3030684 Immersion blender XM-51 230/50-60/1

3030820 Immersion blender XM-51 230/50-60/1

\* Ask for special versions availability

DYNAMIC PREPARATION  
COMMERCIAL HAND BLENDERS

product sheet  
updated 03/02/2025



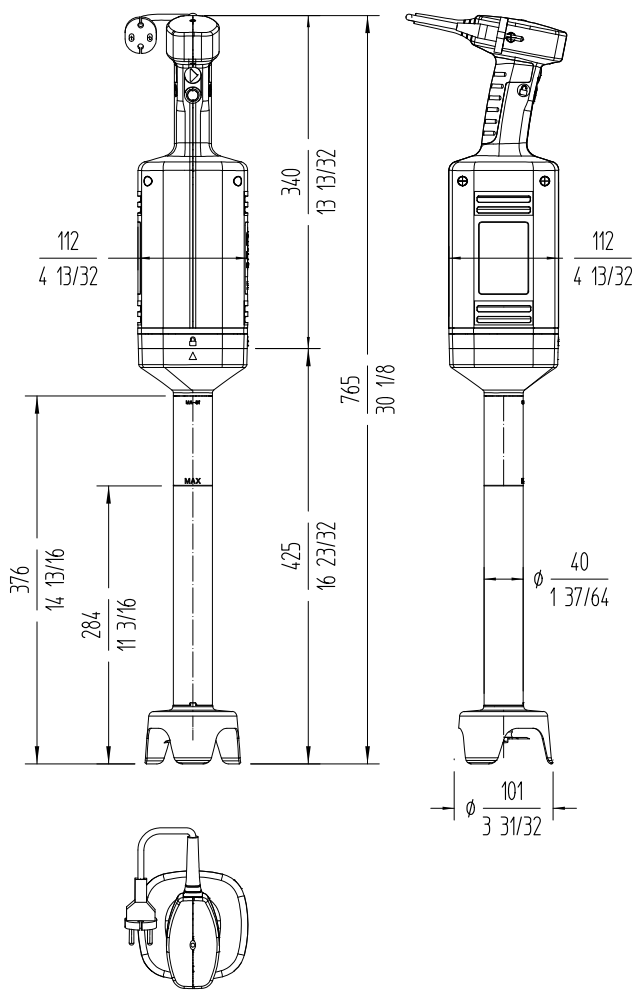


# HAND BLENDER XM-51

Professional immersion blender. 570 W.



DYNAMIC PREPARATION  
COMMERCIAL HAND BLENDERS



[www.sammic.co.uk](http://www.sammic.co.uk)

Food Service Equipment Manufacturer

Unit 2, Trevanah Road

Troon Industrial Park

LE4 9LS - Leicester

[uksales@sammic.com](mailto:uksales@sammic.com)

Tel.: +44 0116 246 1900



Project

Date

Item

Qty

Approved

product sheet  
updated 03/02/2025