



COMBI CK-48V

2 in 1: high capacity vegetable cutter (1300 lb) + cutter with 8 liter bowl.



- ✓ Built-in parametrisable programs to obtain the desired texture in seconds and in a standardized way: dense texture, fine texture, pulses (PrecisePulse function).
- ✓ Option to customize programs for recipe standardization.

Built to last

- ✓ Made from stainless steel and food-grade materials of the highest quality: stainless steel motor block and food-grade aluminium head. Stainless steel bowl with highly-resistant lid.

Maximum comfort for the user

- ✓ Ergonomic design. Maximum comfort for the user.
- ✓ Lateral product output: it requires less room on the work surface and directs the product avoiding splashing.
- ✓ Advanced control panel that is very intuitive to use and offers all the information at a glance.

Maintenance, safety, hygiene

- ✓ Plunger, lid and hopper easy to remove for changing or cleaning.
- ✓ Combination of security systems: head, covers, bowl, power switch.
- ✓ Appliance certified by NSF International (regulations on hygiene, cleaning and materials suitable for contact with foods).
- ✓ 100% tested.

SALES DESCRIPTION

It has a variable speed motor block, large-capacity head and 8 l cutter bowl equipped with a rotor with micro-serrated blades.
"Brushless" technology.

Equipped with "brushless" technology: powerful and efficient motors

- ✓ Maximum efficiency: maintain the torque throughout the speed range.
- ✓ Exclusive "Force control system": guarantee of a uniform and high quality result.
- ✓ Lightweight and compact design: they weigh less, they occupy less space.
- ✓ Improved air/water-tightness since no ventilation is required.
- ✓ They generate less noise: improved workplace environment.

Cutting function: a perfect cut

- ✓ High precision settings and comprehensive cutter and disc design aimed at obtaining a perfect cut.
- ✓ It can be fitted with a wide range of discs and grids of the highest cutting quality. By combining these accessories, you can achieve more than 70 different types of cuts and grating grades.
- ✓ Exclusive "Force Control System" to optimise and standardise the cutting of each product: acoustic warning when the motor exceeds the pre-established force.

Cutter function: efficiency and performance

- ✓ Possibility of programming by time and pulse button.
- ✓ Reverse function, ideal for mixing products instead of cutting.
- ✓ 8 litre stainless steel bowl.
- ✓ Transparent lid with built-in "cut&mix" mixer.
- ✓ Depending on the purpose, the possibility of using optional smooth or perforated blades.

INCLUDES

- ✓ Variable speed motor block.
- ✓ Large capacity head.
- ✓ Cutter bowl, with micro-serrated blade rotor.
- ✓ Universal grid cleaner QC-U.

OPTIONAL

- | | |
|---|--|
| <input type="checkbox"/> Tube head. | <input type="checkbox"/> blades. |
| <input type="checkbox"/> High production semi-automatic bowl. | <input type="checkbox"/> Rotor with perforated cutting blades. |
| <input type="checkbox"/> Discs, grids and disc support. | <input type="checkbox"/> Support-trolley. |
| <input type="checkbox"/> Rotor with smooth cutting | <input type="checkbox"/> Grid cleaning kit. |

ACCESSORIES

- | | |
|---|---|
| <input type="checkbox"/> FCC curved slicing discs | <input type="checkbox"/> Disc and grid packs - Heavy Duty |
| <input type="checkbox"/> FCO rippled slicing discs | <input type="checkbox"/> Disc and grid holder |
| <input type="checkbox"/> FFC chipping grids | <input type="checkbox"/> Blades for CK / K / KE |
| <input type="checkbox"/> FMC dicing grids | <input type="checkbox"/> Quick Cleaner: grid cleaners |
| <input type="checkbox"/> FCE julienne discs | <input type="checkbox"/> FC-D slicing discs |
| <input type="checkbox"/> FR shredding & grating discs | <input type="checkbox"/> SH shredding & grating discs |

SPECIFICATIONS

Total loading: 3 Hp

As vegetable preparation machine

Hourly production: 400 lb - 1300 lb

Inlet opening: 44.4 in²

Disc diameter: 8"

Speed as veg. slicer: 300 rpm - 1000 rpm

External dimensions (W x D x H): 15.4" x 15.7" x 25.7"

Net weight: 67.9 lb





COMBI CK-48V

2 in 1: high capacity vegetable cutter (1300 lb) + cutter with 8 liter bowl.



As cutter

Bowl capacity: 8.5 qt
Speeds as cutter (positions): 300 rpm - 3000 rpm
External dimensions (W x D x H): 11.3" x 15.2" x 20.4"
Net weight (Cutter): 41.9 lb
Noise level (1m.): <70 dB(A)
Background noise: 32 dB(A)

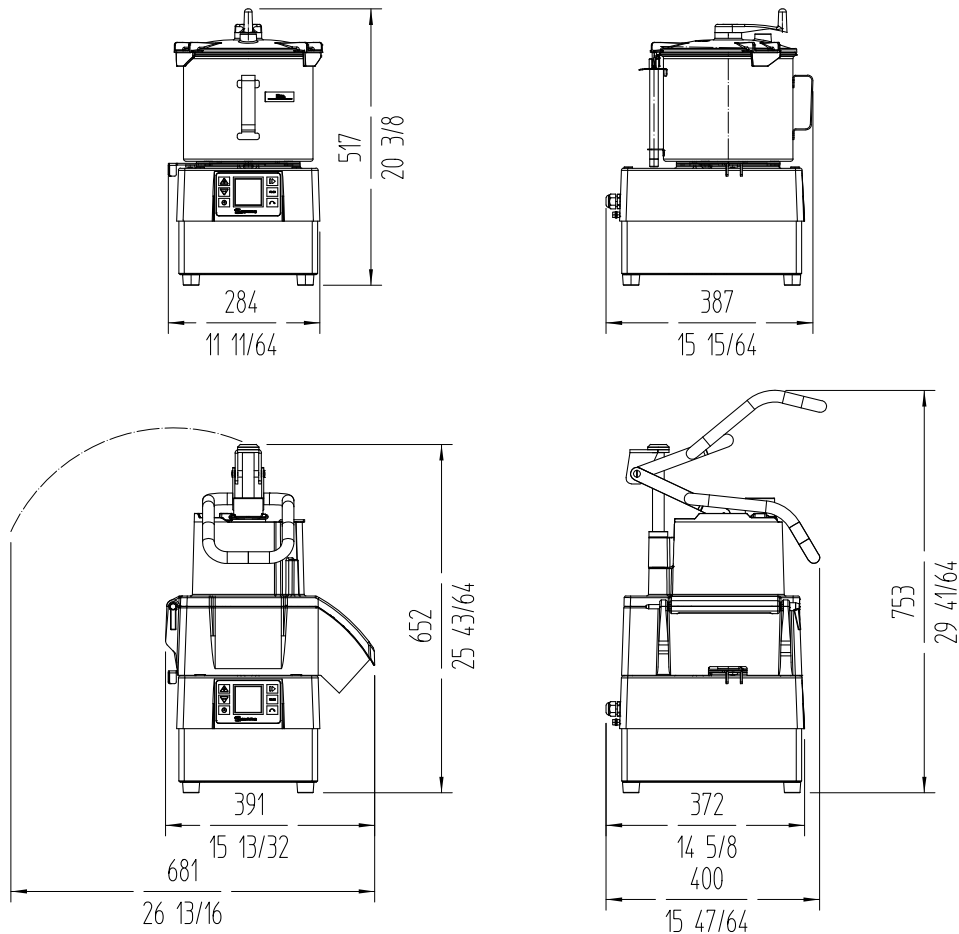
Crated dimensions
27.8 x 16.3 x 20.3 "

Volume Packed: 0.15 m³
Gross weight: 79.6 lbs.

AVAILABLE MODELS

1050822 Combi vegetable prep.-cutter CK-48V 120/50-60/1

* Ask for special versions availability



sammic | www.sammic.us
Food Service Equipment Manufacturer

usa@sammic.com
1225 Hartrey Avenue
60202-1056 Evanston, IL

phone +1 (224) 307-2232
toll free +1 844 275 3848



Project

Date

Item

Qty

Approved

product sheet
updated 02/03/25