



# PASS-THROUGH WAREWASHER UX-120 ISO DD

Pass-through glass- and dishwasher. Rack size 500x500mm and door clearance 430 mm.



WARE WASHING  
PASS-THROUGH WAREWASHERS



## SALES DESCRIPTION

Sani-Control: guaranteed disinfection.  
Double-walled hood: insulation and energy efficiency.  
Exclusive Hydroblade™ washing arms: maximum effectiveness.  
3-stage filtering system.

### Sani-Control guarantee

- ✓ GUARANTEED DISINFECTION in compliance with standard DIN 10534.
- ✓ THERMAL LOCK function: Ensures that rinsing will be carried out at the ideal temperature to disinfect the dishes.

### New recessed bodywork

- ✓ Ergonomic design with rounded corners to prevent the accumulation of dirt and facilitate cleaning.
- ✓ Compact tank volume (50% water saving compared to the previous range).

### Double-Walled (Ultra ISO)

- ✓ Double-Walled Structure: thermo-acoustic insulation to attenuate the sound level and improve energy efficiency.

### Hydroblade™ washing arms

- ✓ Redesigned nozzles for greater washing performance.
- ✓ The “monoblock” design delivers durability and resistance to impacts.
- ✓ 30% savings in water consumption during rinsing compared to the previous range.

### 3-stage filter system: surface, tank and extraction

- ✓ Keeps the washing water in optimal conditions to maintain constant washing performance.

### Designed to last

- ✓ “Flow” opening mechanism: allows the hood to be raised with less effort.

- ✓ High load capacity 43 cm / 17”: suitable for GN 1/1 and Euronorm.
- ✓ Stainless steel surface filters for greater stability and resistance during intensive use.

### Premium warewashing

- ✓ Soft start: progressive start-up of the washing pump to protect fragile items.
- ✓ Colour LCD Display: intuitive communication of the machine status by means of messages, colour codes and icons.
- ✓ Dedicated cycles: selection of the ideal washing programme using icons.
- ✓ Adaptable: allows the main parameters of the machine to be adjusted to the needs of each user.
- ✓ TEMPERATURE DISPLAY.
- ✓ Wash Plus+ function: increases the intensity of the wash cycle for greater cleaning performance.
- ✓ Control panel with IP65 humidity protection.

### You will never WASH ALONE

- ✓ Tech-Services: our team of technicians will help you so that your machine is always ready for use.
- ✓ Design Services: tell us what your needs are and we will advise you.
- ✓ 60 years of experience and know-how at your disposal.

## INCLUDES

- ✓ Rinse aid pump.
- ✓ Detergent Dispenser
- ✓ 1 glasses basket.
- ✓ 1 mixed basket (plates).
- ✓ 1 cutlery basket.

## OPTIONAL

- ☐ Drainage pump with level sensor. Proactive tank water renewal.

## ACCESSORIES

- ☐ Tables for pass-through dishwashers
- ☐ Manual water softeners
- ☐ Automatic water softeners
- ☐ 500 x 500 mm baskets
- ☐ Inserts & supplements
- ☐ Central sorting tables
- ☐ Double connection central sorting table
- ☐ Prewashing tables for pass-through and rack conveyor dishwashers
- ☐ Connecting tables for pass-through dishwashers and rack conveyors
- ☐ Reverse osmosis devices OS-140
- ☐ External control panel for UX pass-through dishwashers

## SPECIFICATIONS

Basket dimensions: 500 mm x 500 mm  
Useful height: 430 mm

Cycles: 6  
Cycle duration: 60/90/100/150/210”  
Production baskets / hour: 60/40/36/24/17

Boiler capacity: 12 l  
Wash tank capacity: 25 l

### Consumption and savings

- ✓ Water consumption/cycle: 3 l
- ✓ Automatic saving mode in: 25’
- ✓ Automatic switch-off: 120’





# PASS-THROUGH WAREWASHER UX-120 ISO DD

Pass-through glass- and dishwasher. Rack size 500x500mm and door clearance 430 mm.



WARE WASHING  
PASS-THROUGH WAREWASHERS

## Energy consumption

\_\_Water consumption/cycle (kWh): 0,22 kWh  
Tank filling consumption (kWh): 1,07 kWh

## Loading\_\_

Pump: 1000 W / 1.3 Hp  
Tank: [v:015\_pot\_cuba]  
Boiler: [v:014\_pot\_calderin]  
Total loading: 8500 W (1~) / 10000 W (3~)

## External dimensions (W x D x H)

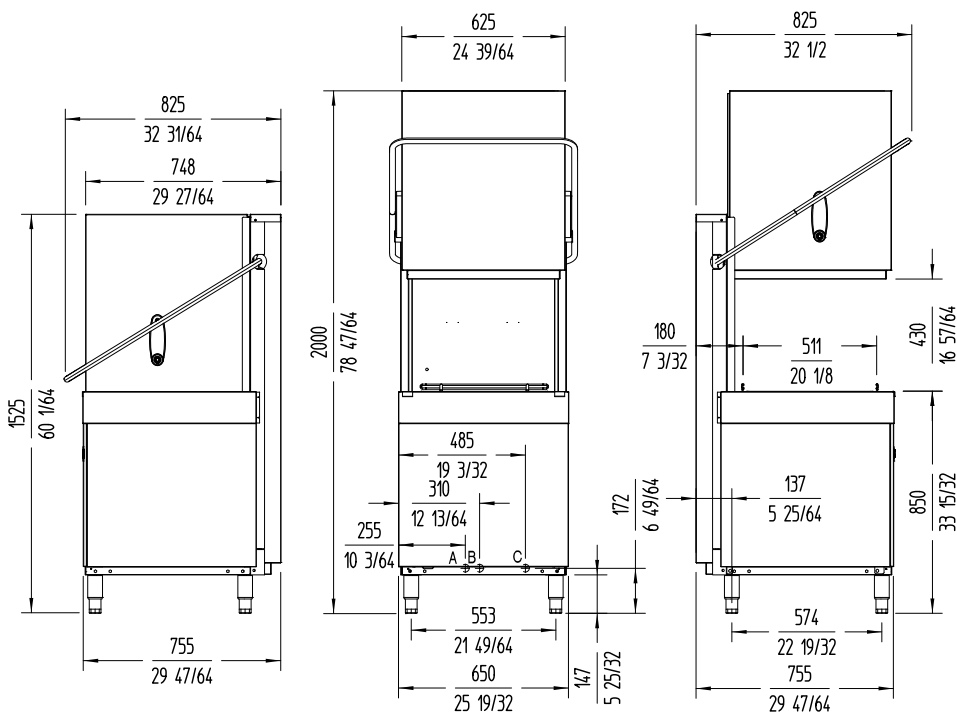
- ✓ Width: 650 mm (Wide with handle: 725 mm)
- ✓ Depth: 755 mm (Bottom with handle: 835 mm)
- ✓ Height: 2000 mm / 1520 mm

Wash temperature: 55°C  
Rinse temperature: 87°C  
Net weight: 116 kg  
Noise level (1m.): <70 dB(A)

Crated dimensions  
760 x 860 x 1530 mm  
Gross weight: 127 kg

## AVAILABLE MODELS

\* Ask for special versions availability



A: Entrada de agua 3/4" GAS.  
B: Tubo de desague Ø30 mm.  
C: Cable conexión.



sammic.co.uk

Food Service Equipment Manufacturer  
Unit 2, Trevanah Road  
Troon Industrial Park  
LE4 9LS - Leicester  
uksales@sammic.com  
Tel.: +44 0116 246 1900



Project

Date

Item

Qty

Approved

product sheet  
updated 19/03/2025