



[www.sammic.com](http://www.sammic.com)

# Guía de cortes / Cutting guide / Guide de coupe



## COMPACT LINE



FCS



FCOS

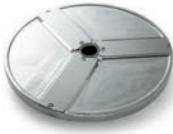


FFS\*

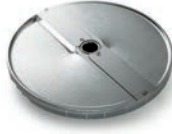


FMS\*

## HEAVY-DUTY LINE



FC



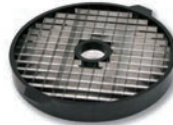
FC



FCO



FFC\*



FMC\*



FMC\*

Rodajas / Slices /  
Rondelles



Rodajas onduladas / Rippled  
slices / Rondelles ondulées



Fritas / Fries / Pommes-frites



Cubos / Dices / Dés



\*Rejilla combinada con disco FCS-G / FC  
Grid combined with FCS-G / FC disc  
Grille combinée avec disque FCS-G / FC



**COMPACT LINE**

**HEAVY-DUTY LINE**



FCC



FCC



FCES



FCE



FCE

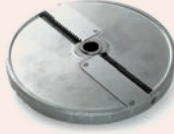
Rodajas (cuchillas curvas) /  
Slices (curved blades) /  
Rondelles (lames courbes)



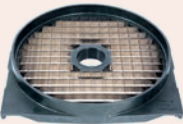
Tiras / Strips / Bâtons



FCES-4+4G

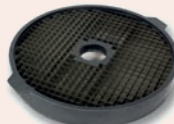


FCE-4+4G



FMS-8

Déli-cut



FMC-8D

Déli-cut

**NEW!**



SHS



SH



SH

Rallado / Shredding discs / Râpeurs



SHSF / SHSG



SHF



SHG

Rallado en polvo / Dusting discs /  
Râpeurs en poudre



## COMPACT LINE

CA-21, CA-2V, CK-241, CK-24V

GAMA / RANGE / GAMME	1mm	2mm	3mm	4mm	5mm	6mm	7mm	8mm	10mm	12mm	Polvo / Dust / Poudre
FCS	X	X	X	X	X	X		X	X	X	
FCOS		X									
FFS								X	X		
FMS								X	X	X	
FCES		X		X		X					
FCES + FMS* Delli-cut				X	X						
SHS		X	X	X			X				X

## HEAVY-DUTY LINE

CA-31, CA-3V, CA-41, CA-4V, CK-35V, CK-38V, CK-45V, CK-48V

GAMA / RANGE / GAMME	1mm	2mm	3mm	4mm	5mm	6mm	7mm	8mm	10mm	14mm	20mm	25mm	Polvo / Dust / Poudre
FC	X	X	X			X		X	X	X	X	X	
FCO		X	X			X							
FFC								X	X				
FMC								X	X	X	X	X	
FCC		X	X		X								
FCE		X		X				X					
FCE + FMC* Delli-cut				X									
SH		X	X	X		X	X						X

\* Medida recomendada: 4 x 4 x 8 mm. / Recommended size: 4 x 4 x 8 mm. / Taille recommandée : 4 x 4 x 8 mm.