



PASS-THROUGH WAREWASHER AX-100BC

Pass-through glass- and dishwasher. Rack size 500 mm x 500 mm and door clearance 430 mm.



WARE WASHING
PASS-THROUGH WAREWASHERS



SALES DESCRIPTION

Sani-Control: guaranteed disinfection. Constant high temperature rinse system for optimal disinfection. Exclusive Hydroblade™ washing arms: maximum effectiveness. 3-stage filtering system.

Sani-Control guarantee

- ✓ GUARANTEED DISINFECTION in compliance with standard DIN 10534.
- ✓ THERMAL LOCK function: Ensures that rinsing will be carried out at the ideal temperature to disinfect the dishes.
- ✓ CONSTANT HIGH TEMPERATURE RINSE system for optimal disinfection.
- ✓ The PRESSURE PUMP guarantees effective high-pressure rinsing.
- ✓ WRAS certified.

New recessed bodywork

- ✓ Ergonomic design with rounded corners to prevent the accumulation of dirt and facilitate cleaning.
- ✓ Compact tank volume (50% water saving compared to the previous range).

Hydroblade™ washing arms

- ✓ Redesigned nozzles for greater washing performance.
- ✓ The “monoblock” design delivers durability and resistance to impacts.
- ✓ 30% savings in water consumption during rinsing compared to the previous range.

3-stage filter system: surface, tank and extraction

- ✓ Keeps the washing water in optimal conditions to maintain constant washing performance.

Designed to last

- ✓ “Flow” opening mechanism: allows the hood to be raised with less effort.

- ✓ High load capacity 43 cm: suitable for GN 1/1 and Euronorm.
- ✓ Stainless steel surface filters for greater stability and resistance during intensive use.

Warewashing, made simple

- ✓ TEMPERATURE DISPLAY.
- ✓ Control panel with IP65 humidity protection.

You will never WASH ALONE

- ✓ Tech-Services: our team of technicians will help you so that your machine is always ready for use.
- ✓ Design Services: tell us what your needs are and we will advise you.
- ✓ 60 years of experience and know-how at your disposal.

INCLUDES

- ✓ Detergent dispenser.
- ✓ Drainage pump with level sensor. Proactive tank water renewal.
- ✓ Type-A air break. WRAS approved break tank.
- ✓ Rinse aid pump.
- ✓ 1 glasses basket.
- ✓ 1 mixed basket (plates).
- ✓ 1 small basket for cutlery.

OPTIONAL

- ☐ Automatic resin regeneration water softener with salt detector.

ACCESSORIES

- ☐ Tables for pass-through dishwashers
- ☐ Manual water softeners
- ☐ Automatic water softeners
- ☐ 500 x 500 mm baskets
- ☐ Inserts & supplements
- ☐ Central sorting tables
- ☐ Double connection central sorting table
- ☐ Prewashing tables for pass-through and rack conveyor dishwashers
- ☐ Connecting tables for pass-through dishwashers and rack conveyors
- ☐ Reverse osmosis devices OS-140



SAMMIC, S.L. · Basarte, 1
20720 AZKOITIA (Gipuzkoa) · SPAIN



PASS-THROUGH WAREWASHER AX-100BC

Pass-through glass- and dishwasher. Rack size 500 mm x 500 mm and door clearance 430 mm.



SPECIFICATIONS

Basket dimensions: 500 mm x 500 mm
Useful height: 430 mm

Cycles: 3

Cycle duration: 120 / 180 / 210"

Production baskets / hour: 30 / 24 / 17

Boiler capacity: 12 l

Wash tank capacity: 25 l

Consumption and savings

✓ Water consumption/cycle: 2.8 l

✓ Automatic saving mode in: y'

Energy consumption

Loading__

✓ Pump: 750 W / 1 Hp

✓ Tank: 2500 W

✓ Boiler: 6000 W

✓ Total loading: 6700 W

External dimensions (W x D x H)

✓ Width: 648 mm (Wide with handle: 725 mm)

✓ Depth: 756 mm (Bottom with handle: 835 mm)

✓ Height: 2000 mm / 1508 mm

Temperature

✓ Rinse temperature: 87°C

Crated dimensions

760 x 860 x 1530 mm

Gross weight: 123 kg

AVAILABLE MODELS

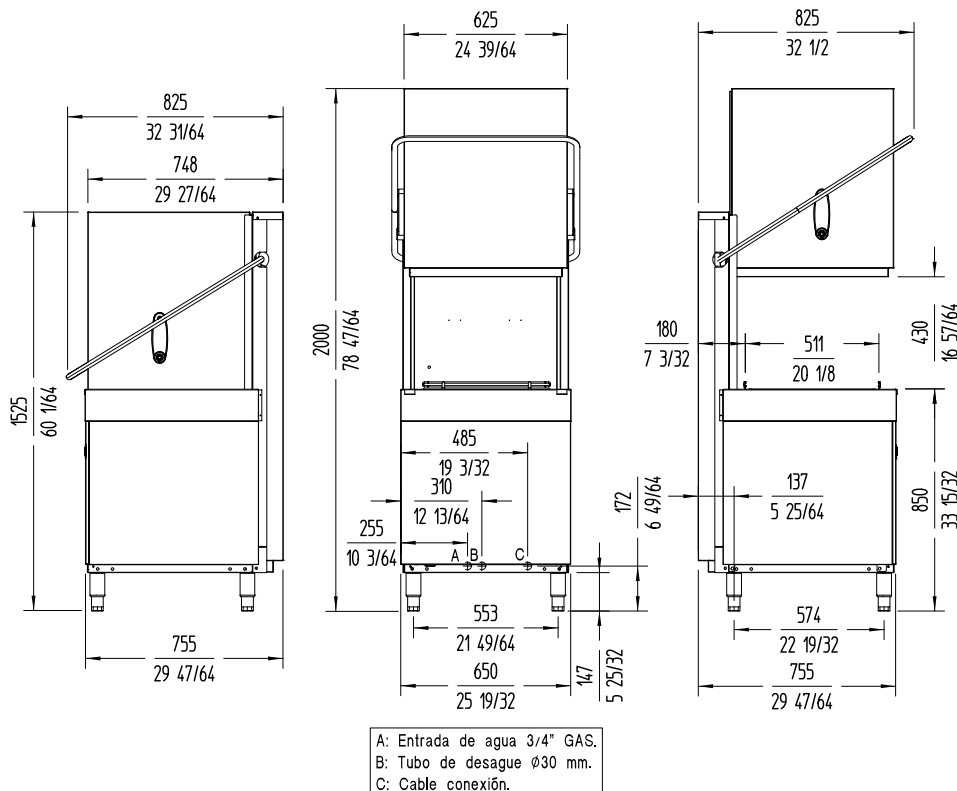
1303313 AX-100BC 230/50/1 DD

1303314 AX-100BC 400/50/3N DD

1303317 AX-100BCD 230/50/1 DD

1303318 AX-100BCD 400/50/3N DD

* Ask for special versions availability



WARE WASHING
PASS-THROUGH WAREWASHERS



sammic.co.uk

Food Service Equipment Manufacturer

Unit 2, Trevanah Road

Troon Industrial Park

LE4 9LS - Leicester

uksales@sammic.com

Tel.: +44 0116 246 1900



Project

Date

Item

Qty

Approved

product sheet
updated 15/07/2025