



PASS-THROUGH WAREWASHER UX-120V ISO DD

Pass-through glass- and dishwasher. Rack size 500x500mm and door clearance 430 mm.



SALES DESCRIPTION

Sani-Control: guaranteed disinfection.
Double-walled hood: insulation and energy efficiency.
Exclusive Hydroblade™ washing arms: maximum effectiveness.
3-stage filtering system.
Steam condenser: environmental improvement and energy efficiency.

Sani-Control guarantee

- ✓ GUARANTEED DISINFECTION in compliance with standard DIN 10534.
- ✓ THERMAL LOCK function: ensures that rinsing will be carried out at the ideal temperature to disinfect the dishes.

Steam condenser

- ✓ Reduces the steam released into the installation by 75%.
- ✓ Factory-integrated condenser module, no installation required.

New recessed bodywork

- ✓ Ergonomic design with rounded corners to prevent the accumulation of dirt and facilitate cleaning.
- ✓ Compact tank volume (50% water saving compared to the previous range).

Double-Walled (Ultra ISO)

- ✓ Double-Walled Structure: thermo-acoustic insulation to attenuate the sound level and improve energy efficiency.

Hydroblade™ washing arms

- ✓ Redesigned nozzles for greater washing performance.
- ✓ The “monoblock” design delivers durability and resistance to impacts.
- ✓ 30% savings in water consumption during rinsing compared to the previous range.

3-stage filter system: surface, tank and extraction

- ✓ Keeps the washing water in optimal conditions to maintain constant washing performance.

Designed to last

- ✓ “Flow” opening mechanism: allows the hood to be raised with less effort.
- ✓ High load capacity 43 cm / 17”: suitable for GN 1/1 and Euronorm.
- ✓ Stainless steel surface filters for greater stability and resistance during intensive use.

Premium warewashing

- ✓ Soft start: progressive start-up of the washing pump to protect fragile items.
- ✓ Colour LCD Display: intuitive communication of the machine status by means of messages, colour codes and icons.
- ✓ Dedicated cycles: selection of the ideal washing programme using icons.
- ✓ Adaptable: allows the main parameters of the machine to be adjusted to the needs of each user.
- ✓ TEMPERATURE DISPLAY.
- ✓ Wash Plus+ function: increases the intensity of the wash cycle for greater cleaning performance.
- ✓ Control panel with IP65 humidity protection.

You will never WASH ALONE

- ✓ Tech-Services: our team of technicians will help you so that your machine is always ready for use.
- ✓ Design Services: tell us what your needs are and we will advise you.
- ✓ 60 years of experience and know-how at your disposal.

INCLUDES

- ✓ Rinse aid pump.
- ✓ Detergent dispenser
- ✓ 1 glasses basket.
- ✓ 1 mixed basket (plates).
- ✓ 1 cutlery basket.
- ✓ Drainage pump with level sensor. Proactive tank water renewal.

OPTIONAL

- ☐ Automatic resin regeneration water softener with salt detector.

ACCESSORIES

- ☐ Tables for pass-through dishwashers
- ☐ Manual water softeners
- ☐ Automatic water softeners
- ☐ 500 x 500 mm baskets
- ☐ Inserts & supplements
- ☐ Central sorting tables
- ☐ Double connection central sorting table
- ☐ Prewashing tables for pass-through and rack conveyor dishwashers
- ☐ Connecting tables for pass-through dishwashers and rack conveyors
- ☐ Reverse osmosis devices OS-140
- ☐ External control panel for UX pass-through dishwashers

SPECIFICATIONS

Basket dimensions: 500 mm x 500 mm
Useful height: 430 mm

Cycles: 6
Cycle duration: 60/90/100/150/210”
Production baskets / hour: 60/40/36/24/17



PASS-THROUGH WAREWASHER UX-120V ISO DD

Pass-through glass- and dishwasher. Rack size 500x500mm and door clearance 430 mm.



WARE WASHING
PASS-THROUGH WAREWASHERS

Boiler capacity: 12 l
Wash tank capacity: 25 l

Consumption and savings

- ✓ Water consumption/cycle: 3 l
- ✓ Automatic saving mode in: 25'
- ✓ Automatic switch-off: 120'

Energy consumption

Water consumption/cycle (kWh): 0,22 kWh
Tank filling consumption (kWh): 1,07 kWh

Loading__
Pump: 1000 W / 1.3 Hp
Tank: [v:015_pot_cuba]
Boiler: [v:014_pot_calderin]
Total loading: 8500 W (1~) / 10000 W (3~)

External dimensions (W x D x H)

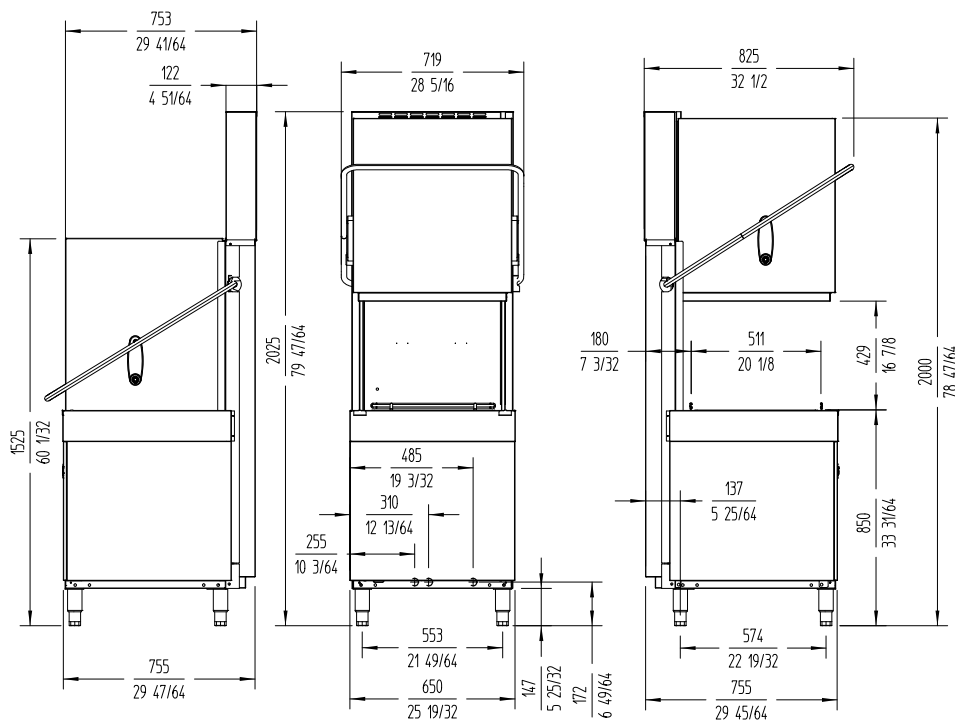
- ✓ Width: 650 mm (Wide with handle: 725 mm)
- ✓ Depth: 755 mm (Bottom with handle: 835 mm)
- ✓ Height: 2035 mm / 2035 mm

Wash temperature: 55°C
Rinse temperature: 87°C
Net weight: 150 kg
Noise level (1m.): <70 dB(A)

Crated dimensions
760 x 860 x 2050 mm
Gross weight: 161 kg

AVAILABLE MODELS

* Ask for special versions availability



sammic.co.uk

Food Service Equipment Manufacturer
Unit 2, Trevanah Road
Troon Industrial Park
LE4 9LS - Leicester
uksales@sammic.com
Tel.: +44 0116 246 1900



Project

Date

Item

Qty

Approved

product sheet
updated 19/03/2025