



# PASS-THROUGH DISHWASHER UX-120BC DD

Pass-through glass- and dishwasher. Rack size 500 mm x 500 mm and door clearance 430 mm.



WARE WASHING  
PASS-THROUGH WAREWASHERS



## SALES DESCRIPTION

Sani-Control: guaranteed disinfection.  
Exclusive Hydroblade™ washing arms: maximum effectiveness.  
3-stage filtering system.

### Sani-Control guarantee

- ✓ GUARANTEED DISINFECTION in compliance with standard DIN 10534.
- ✓ THERMAL LOCK function: ensures that rinsing will be carried out at the ideal temperature to disinfect the dishes.
- ✓ CONSTANT HIGH TEMPERATURE RINSE system for optimal disinfection.
- ✓ The PRESSURE PUMP guarantees effective high-pressure rinsing.
- ✓ WRAS certified.

### New recessed bodywork

- ✓ Ergonomic design with rounded corners to prevent the accumulation of dirt and facilitate cleaning.
- ✓ Compact tank volume (50% water saving compared to the previous range).

### Hydroblade™ washing arms

- ✓ Redesigned nozzles for greater washing performance.
- ✓ The “monoblock” design delivers durability and resistance to impacts.
- ✓ 30% savings in water consumption during rinsing compared to the previous range.

### 3-stage filter system: surface, tank and extraction

- ✓ Keeps the washing water in optimal conditions to maintain constant washing performance.

### Designed to last

- ✓ “Flow” opening mechanism: allows the hood to be raised with less effort.
- ✓ High load capacity 43 cm: suitable for GN 1/1 and Euronorm.
- ✓ Stainless steel surface filters for greater stability and resistance during intensive use.

### Premium warewashing

- ✓ Soft start: progressive start-up of the washing pump to protect fragile items.

- ✓ Colour LCD Display: intuitive communication of the machine status by means of messages, colour codes and icons.
- ✓ Dedicated cycles: selection of the ideal washing programme using icons.
- ✓ Adaptable: allows the main parameters of the machine to be adjusted to the needs of each user.
- ✓ TEMPERATURE DISPLAY.
- ✓ Wash Plus+ function: increases the intensity of the wash cycle for greater cleaning performance.
- ✓ Control panel with IP65 humidity protection.

### You will never WASH ALONE

- ✓ Tech-Services: our team of technicians will help you so that your machine is always ready for use.
- ✓ Design Services: tell us what your needs are and we will advise you.
- ✓ 60 years of experience and know-how at your disposal.

## INCLUDES

- ✓ Peristaltic detergent pump.
- ✓ Type-A air break. WRAS approved break tank.
- ✓ Rinse aid pump.
- ✓ 1 glasses basket.
- ✓ 1 mixed basket (plates).
- ✓ 1 cutlery basket.
- ✓ Drainage pump with level sensor. Proactive tank water renewal.

## OPTIONAL

- ☐ Automatic resin regeneration water softener with salt detector.

## ACCESSORIES

- ☐ Tables for pass-through dishwashers
- ☐ Manual water softeners
- ☐ Automatic water softeners
- ☐ 500 x 500 mm baskets
- ☐ Inserts & supplements
- ☐ Central sorting tables
- ☐ Double connection central sorting table
- ☐ Prewashing tables for pass-through and rack conveyor dishwashers
- ☐ Connecting tables for pass-through dishwashers and rack conveyors
- ☐ Reverse osmosis devices OS-140
- ☐ External control panel for UX pass-through dishwashers



SAMMIC, S.L. · Basarte, 1  
20720 AZKOITIA (Gipuzkoa) · SPAIN



## PASS-THROUGH DISHWASHER UX-120BC DD

Pass-through glass- and dishwasher. Rack size 500 mm x 500 mm and door clearance 430 mm.



WARE WASHING  
PASS-THROUGH WAREWASHERS

### SPECIFICATIONS

Basket dimensions: 500 mm x 500 mm

Useful height: 430 mm

Cycles: 6

Cycle duration: 60 / 90 / 100 / 150 / 210"

Production baskets / hour: 60 / 40 / 36 / 24 / 17

Boiler capacity: 12 l

Wash tank capacity: 25 l

#### Consumption and savings

✓ Water consumption/cycle: 2.8 l

✓ Automatic saving mode in: 25'

✓ Automatic switch-off: 120'

#### Energy consumption

Consumption/cycle (kWh): 0,22 kWh

Tank filling consumption (kWh): 1,07 kWh

Loading\_\_

✓ Pump: 1000 W / 1.3 Hp

✓ Tank: 2500 W

✓ Boiler: 7500 / 9000 W

✓ Total loading: 8500 / 10000 W

#### External dimensions (W x D x H)

✓ Width: 648 mm (Wide with handle: 725 mm)

✓ Depth: 756 mm (Bottom with handle: 835 mm)

✓ Height: 2000 mm / 1508 mm

#### Temperature

✓ Rinse temperature: 87°C

Noise level (1m.): <70 dB(A)

Crated dimensions

760 x 860 x 1530 mm

Gross weight: 127 kg

### AVAILABLE MODELS

1303351 UX-120BC 400/503N DD

1303352 UX-120BC 230/50/1 DD

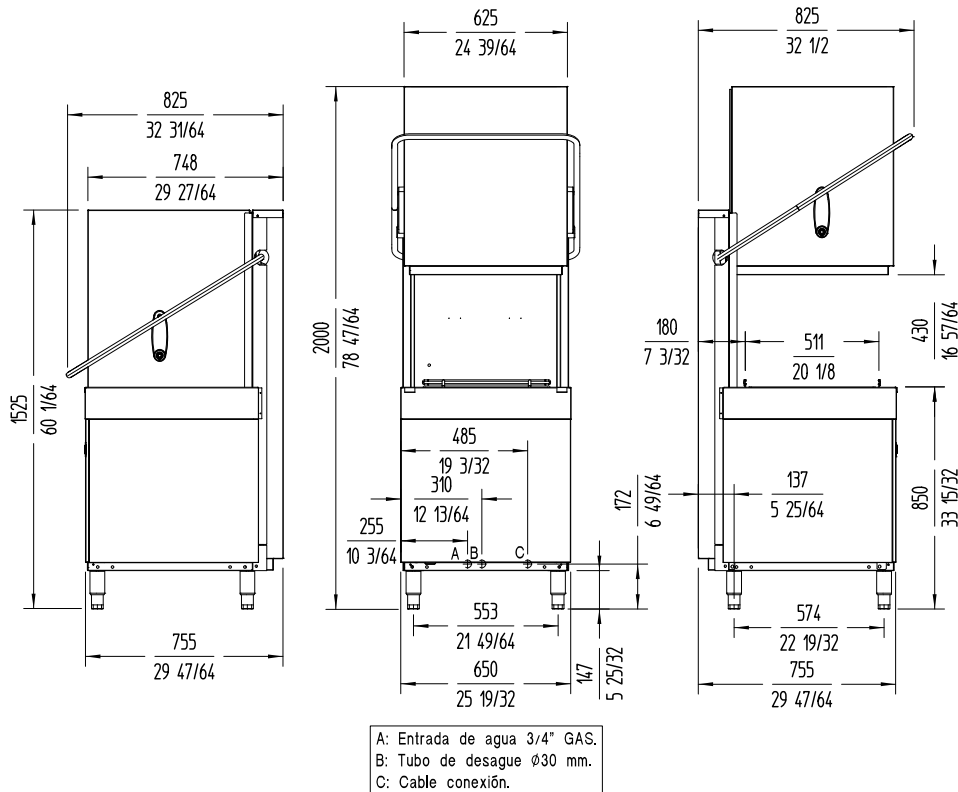
1303355 UX-120BC 220/60/3 DD

1303354 Dishwasher UX-120BC 400-440/50-60/3 DD

1303361 UX-120BCD 400/50/3N DD

1303362 UX-120BCD 230/50/1 DD

\* Ask for special versions availability



sammic.co.uk

Food Service Equipment Manufacturer

Unit 2, Trevanah Road

Troon Industrial Park

LE4 9LS - Leicester

uksales@sammic.com

Tel.: +44 0116 246 1900



Project

Date

Item

Qty

Approved

product sheet  
updated 15/07/2025